





Blended expertise, purposefully applied...

We are a Chiswick based residential property consultancy that provides in-depth experience in the disciplines of estate agency, residential lettings, property management, property staging and interior design – a blend of expertise not commonly found in estate and lettings agency businesses. Having this multi-faceted capability enables us to deliver success to our clients that are seeking a more bespoke and discreet experience than typically offered by high street estate or lettings agents.

Clients value our integrity, energy, expertise and unbiased advice...

The core values of our business are; integrity, clarity and success. Our advice and services are delivered from a trusted platform of professional qualification, experience, dedication and a wealth of in-depth knowledge. This thorough, yet innovative approach to everything that we do has resulted in a strong track record, as evidenced by consistent results and unquestionable success.

What is the new meaning of Bespoke?...

We work with an adaptable approach to our processes to suit individual clients requirements. For example; many of our clients want to avoid public promotion and seek discreet introductions. Over 70% of our transactions are completed without public marketing. We spend less time promoting ourselves and more time combining modern online marketing with a lifetime of networking to introduce the right person in the right way.

More doesn't mean more...

We consciously keep our active portfolio compact, so that we can successfully apply the time, high levels of detail, attention and management you require and deserve whilst achieving our joint objective, success.

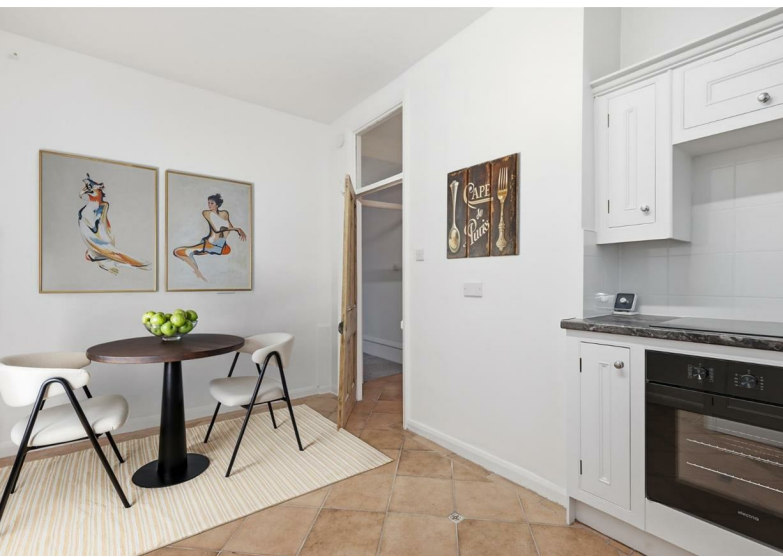


FAUCONBERG ROAD, W4

A bright and spacious, 610 Sq Ft/ 56 Sq M, one bedroom apartment located in one of Chiswick's most desirable Edwardian residential developments.

The apartment features an 16'11 reception room with bay window, newly renovated kitchen/dining room, double bedroom, bathroom, porterage and access to a well maintained communal garden.

Sutton Court is a popular residential development in an area of Chiswick known as Grove Park. The building is often used for filming period dramas due to its handsome architecture combined with rigorous maintenance. The area offers local bars & restaurants, good access to Chiswick High Road and excellent transport connections into and out of town.





Approx. 56.7 sq. metres (610.8 sq. feet)



Total area: approx. 56.7 sq. metres (610.8 sq. feet)

All measurements have been taken as a guide to prospective buyers only and are not precise. This plan is for illustrative purposes only and no responsibility for any error, omission or misstatement. The services, systems and appliances shown have not been tested and no guarantee as to their operability or efficiency can be given. Measurements may have been taken from the widest area and may include wardrobe/cupboard space. No guarantee is given to any measurements including total areas. Buyers are advised to take their own measurements.

© @modephotouk | www.modphoto.co.uk
Plan produced using PlanUp. □

Sutton Court



