





Blended expertise, purposefully applied...

We are a Chiswick based residential property consultancy that provides in-depth experience in the disciplines of estate agency, residential lettings, property management, property staging and interior design – a blend of expertise not commonly found in estate and lettings agency businesses. Having this multi-faceted capability enables us to deliver success to our clients that are seeking a more bespoke and discreet experience than typically offered by high street estate or lettings agents.

Clients value our integrity, energy, expertise and unbiased advice...

The core values of our business are; integrity, clarity and success. Our advice and services are delivered from a trusted platform of professional qualification, experience, dedication and a wealth of in-depth knowledge. This thorough, yet innovative approach to everything that we do has resulted in a strong track record, as evidenced by consistent results and unquestionable success.

What is the new meaning of Bespoke?...

We work with an adaptable approach to our processes to suit individual clients requirements. For example; many of our clients want to avoid public promotion and seek discreet introductions. Over 70% of our transactions are completed without public marketing. We spend less time promoting ourselves and more time combining modern online marketing with a lifetime of networking to introduce the right person in the right way.

More doesn't mean more...

We consciously keep our active portfolio compact, so that we can successfully apply the time, high levels of detail, attention and management you require and deserve whilst achieving our joint objective, success.



ESSEX PLACE, W4

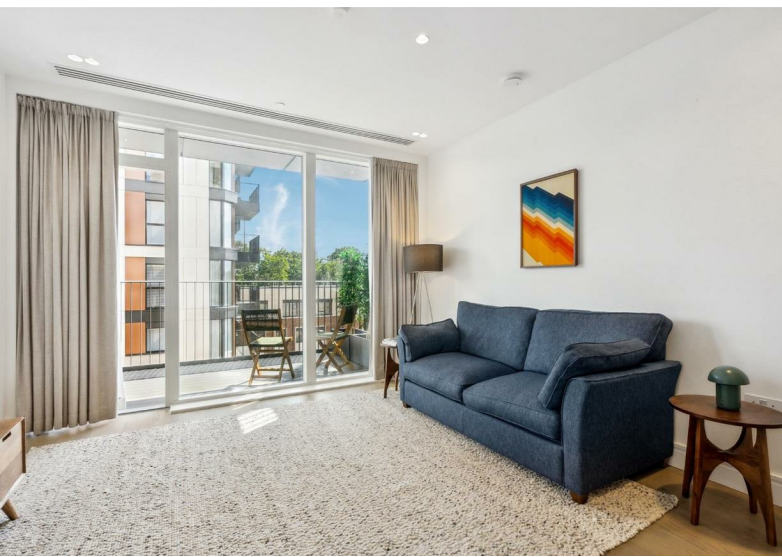
A well presented, 520 Sq Ft / 48.7 Sq M, fourth floor luxury one bedroom apartment with private south facing balcony and communal penthouse roof garden with stunning panoramic views of central London.

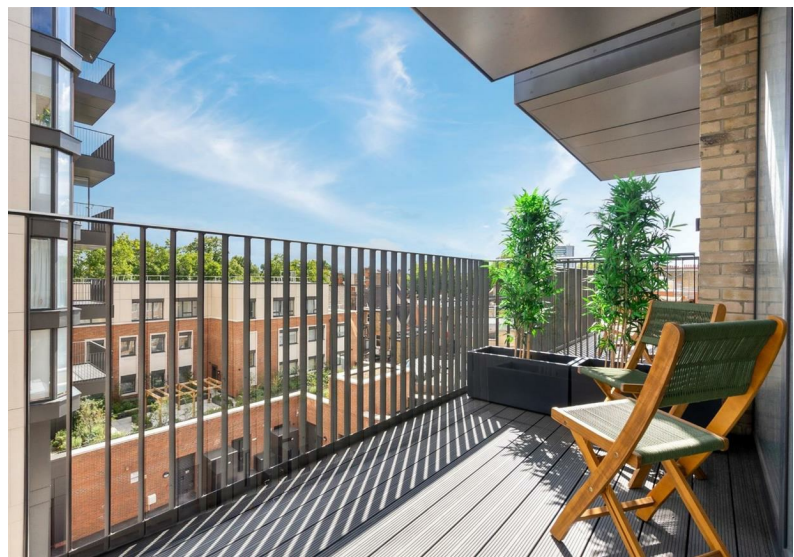
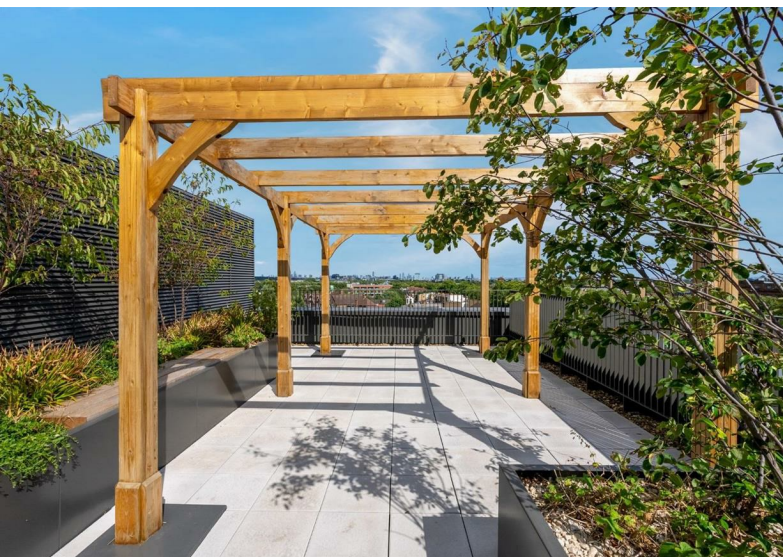
The apartment is set within a centrally located luxury development that offers the perfect blend of comfortable living and urban convenience. Elegant & stylish communal areas, lift access, wide doorways with digital fob access and concierge in the main building to assist with parcel delivery and key management.

The apartment itself offers a high quality of practical living including a temperature control system, south facing private breakfast balcony, well appointed kitchen, bedroom suite that includes a selection of backlit wardrobes and a luxury en-suite shower room.

Stoll House is located in the middle of central Chiswick with excellent access to the full amenities of Chiswick High Road, including high street & boutique shopping, a vast selection of bars, restaurants & cafes combined with excellent transport connections into and out of town.

Generally an excellent proposition for a pied-à-terre whilst being equally attractive as a full time home.





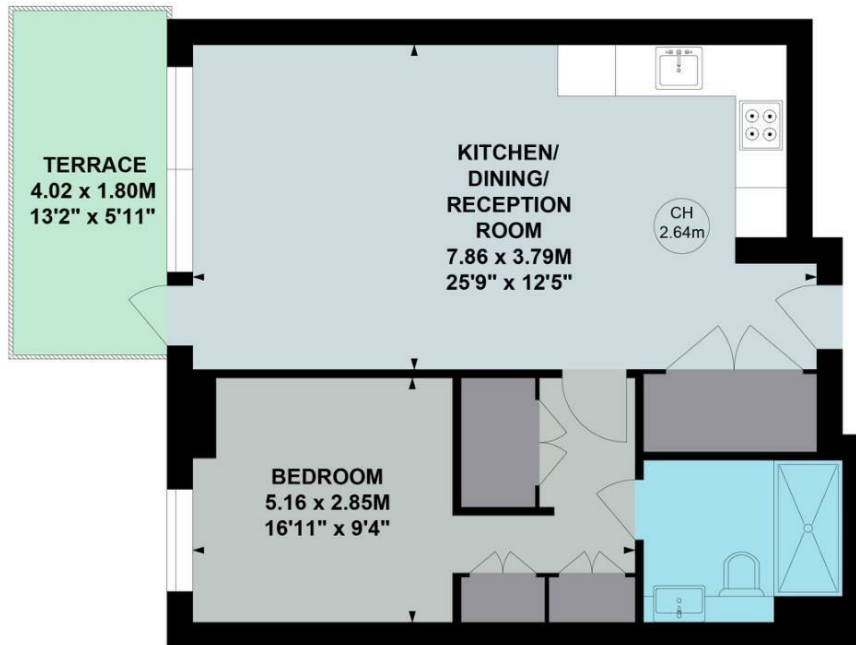
Stoll House, W4

Approximate gross internal area

48.74 sq m / 525 sq ft

Key :

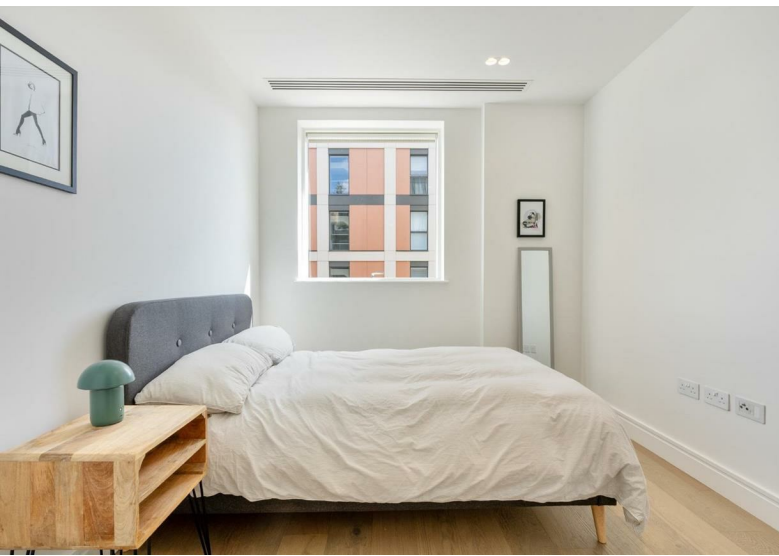
CH - Ceiling Height

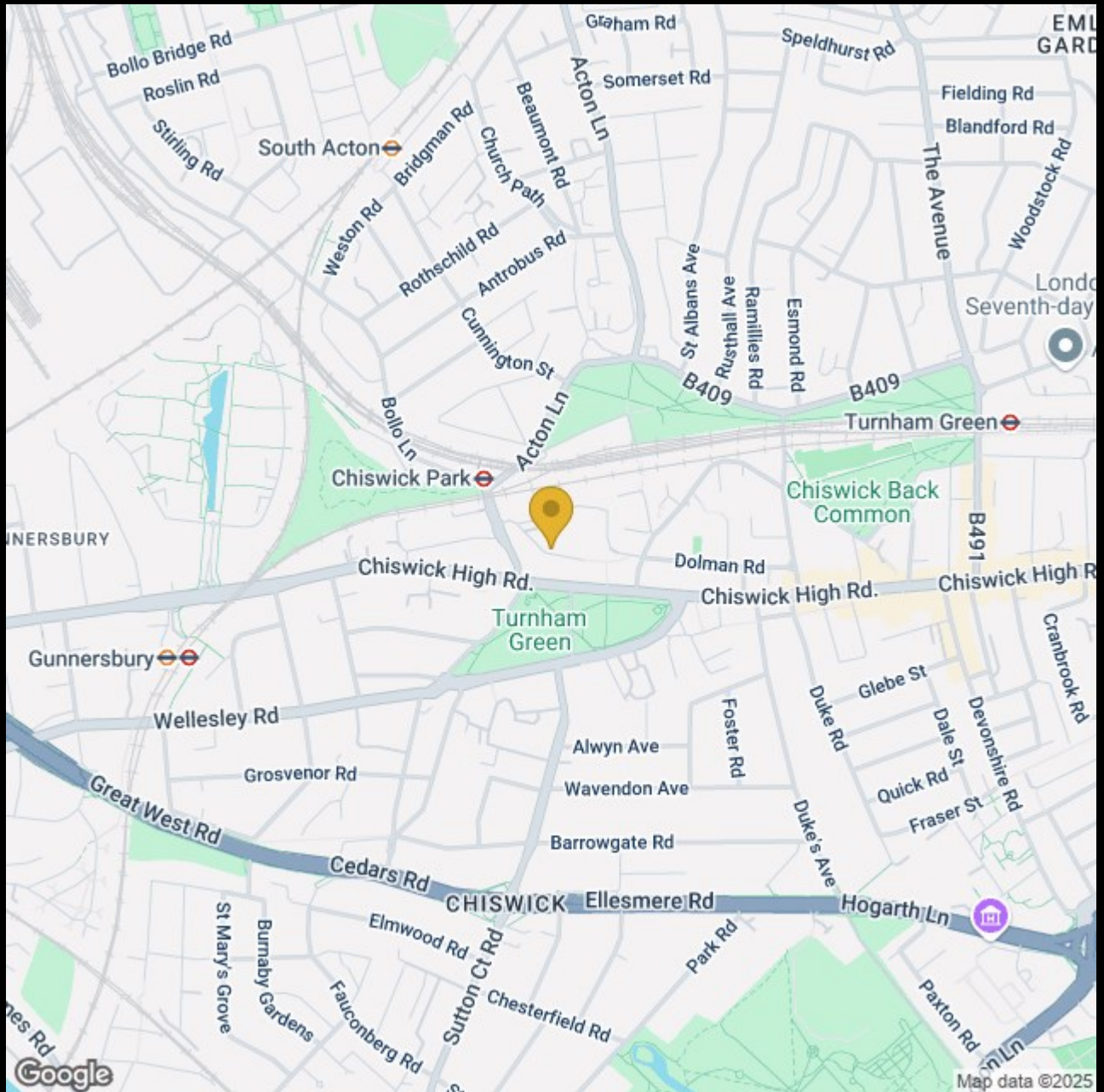


Fourth Floor

Not to scale, for guidance only and must not be relied upon as a statement of fact.

All measurements and areas are approximate only





020 8995 2030
enquiries@harpersofchiswick.com
www.harpersofchiswick.com