





Blended expertise, purposefully applied...

We are a Chiswick based residential property consultancy that provides in-depth experience in the disciplines of estate agency, residential lettings, property management, property staging and interior design – a blend of expertise not commonly found in estate and lettings agency businesses. Having this multi-faceted capability enables us to deliver success to our clients that are seeking a more bespoke and discreet experience than typically offered by high street estate or lettings agents.

Clients value our integrity, energy, expertise and unbiased advice...

The core values of our business are; integrity, clarity and success. Our advice and services are delivered from a trusted platform of professional qualification, experience, dedication and a wealth of in-depth knowledge. This thorough, yet innovative approach to everything that we do has resulted in a strong track record, as evidenced by consistent results and unquestionable success.

What is the new meaning of Bespoke?...

We work with an adaptable approach to our processes to suit individual clients requirements. For example; many of our clients want to avoid public promotion and seek discreet introductions. Over 70% of our transactions are completed without public marketing. We spend less time promoting ourselves and more time combining modern online marketing with a lifetime of networking to introduce the right person in the right way.

More doesn't mean more...

We consciously keep our active portfolio compact, so that we can successfully apply the time, high levels of detail, attention and management you require and deserve whilst achieving our joint objective, success.



Abel

Abel

FITZROY CRESCENT, W4

An opportunity to purchase a 1672 Sq Ft / 155 Sq M, four bedroom, three bathroom family home, set within an award winning Grove Park development that offers great potential for internal refurbishment and a rear extension (subject to usual consents).

The complete accommodation comprises: entrance hallway with walk-in storage cupboard, guest cloakroom, garage, fully fitted kitchen with door to south facing garden, dining room with feature bay overlooking south facing garden.

Stairs to first floor.

18'1 Reception room with double doors leading to ornamental balcony, two double bedrooms and family bathroom (currently converted to walk-in wardrobe).

Stairs to top floor.

Top floor landing with airing cupboard, master bedroom with extensive built-in wardrobes and en-suite bathroom, guest bedroom overlooking garden also with en-suite bathroom.

The property enjoys a 36'1 south facing garden with rear access and off street parking for one vehicle.

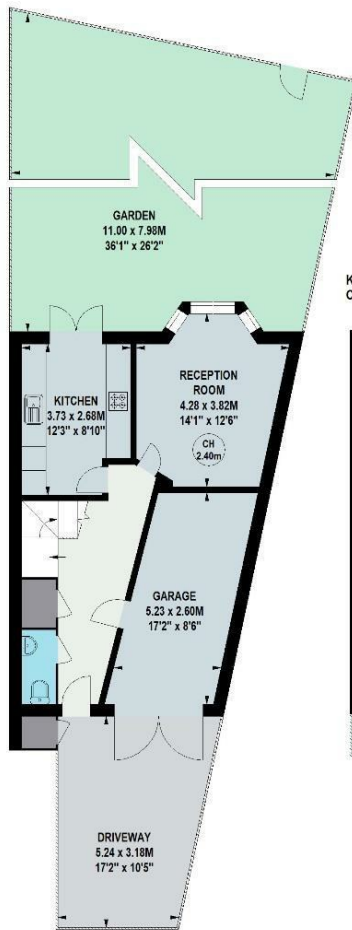
Fitzroy Crescent is located within an award winning development in Grove Park. The area is well regarded for local amenities including being literally across the road from Chiswick House & Gardens, local bars & riverside restaurants, shopping on Chiswick High Road combined with excellent transport connections into and out of town including Chiswick BR station (Direct to Waterloo).



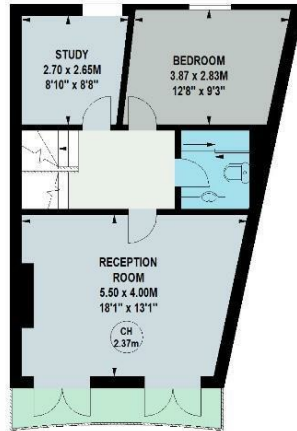


Fitzroy Crescent, W4

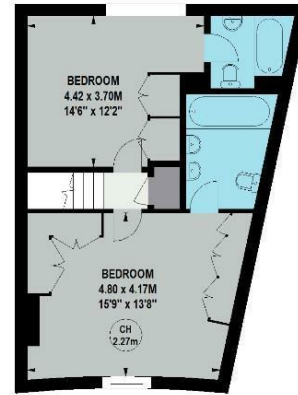
Approximate gross internal area
155.33 sq m / 1672 sq ft



Key :
CH - Ceiling Height



First Floor

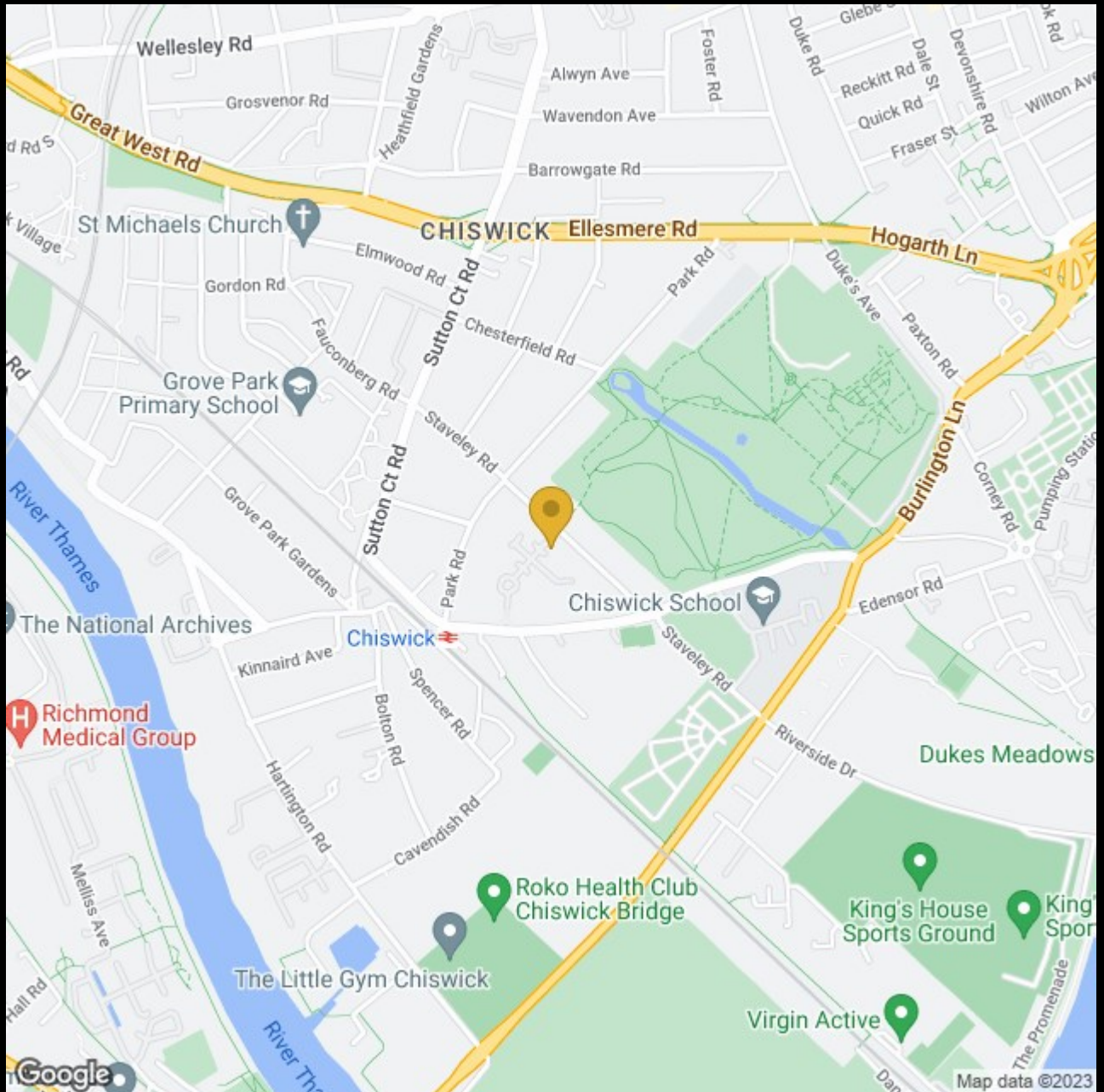


Second Floor

Not to scale, for guidance only and must not be relied upon as a statement of fact.
All measurements and areas are approximate only

Ground Floor





Great West Rd

St Michael's Church

Grove Park Primary School

The National Archives

Richmond Medical Group

The Little Gym Chiswick

Roko Health Club Chiswick Bridge

Virgin Active

King's House Sports Ground

King's Sports Ground

CHISWICK Ellesmere Rd

Chiswick

Hogarth Ln

Burlington Ln

Dukes Meadows

Map data ©2023

Google

+44 (0) 20 8995 2030
enquiries@harpersofchiswick.com
www.harpersofchiswick.com

www.twitter.com/HarpersChiswick
www.facebook.com/harpersofchiswick
www.instagram.com/harpersofchiswick/
www.pinterest.co.uk/harpersofchiswick/