





Blended expertise, purposefully applied...

We are a Chiswick based residential property consultancy that provides in-depth experience in the disciplines of estate agency, residential lettings, property management, property staging and interior design – a blend of expertise not commonly found in estate and lettings agency businesses.

Having this multi-faceted capability enables us to deliver success to our clients that are seeking a more bespoke and discreet experience than typically offered by high street estate or lettings agents.

Clients value our integrity, energy, expertise and unbiased advice...

The core values of our business are; integrity, clarity and success. Our advice and services are delivered from a trusted platform of professional qualification, experience, dedication and a wealth of in-depth knowledge. This thorough, yet innovative approach to everything that we do has resulted in a strong track record, as evidenced by consistent results and unquestionable success.

What is the new meaning of Bespoke?...

We work with an adaptable approach to our processes to suit individual clients requirements. For example; many of our clients want to avoid public promotion and seek discreet introductions. Over 70% of our transactions are completed without public marketing. We spend less time promoting ourselves and more time combining modern online marketing with a lifetime of networking to introduce the right person in the right way.

More doesn't mean more...

We consciously keep our active portfolio compact, so that we can successfully apply the time, high levels of detail, attention and management you require and deserve whilst achieving our joint objective, success.



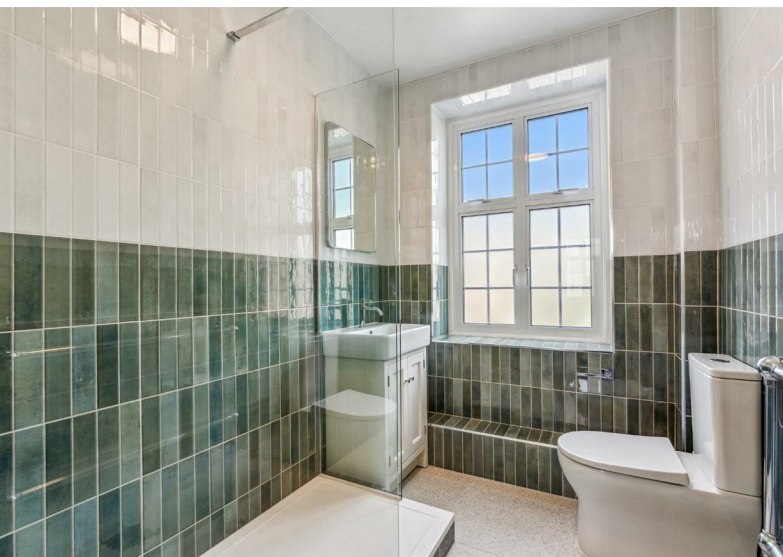
HEATHFIELD TERRACE, W4

A newly refurbished, light & airy, 549 Sq Ft / 50.9 Sq M, one bedroom apartment located within a well maintained portered development just off Chiswick High Road. The apartment also offers the considerable benefits of private off street parking (FCFS), lift and the cost of heating and hot water is included within the rental price.

The accommodation comprises: lift access to third floor, entrance hallway, reception room with feature art-deco style fireplace, newly installed fully fitted kitchen , inner hallway with storage, spacious bedroom and newly fitted well appointed shower room.

Heathfield Court is located on Heathfield Terrace which runs off Chiswick High Road, providing excellent access to all the amenities of central Chiswick including high street and boutique shopping, over 60 bars & restaurants combined with excellent transport connections into and out of town.





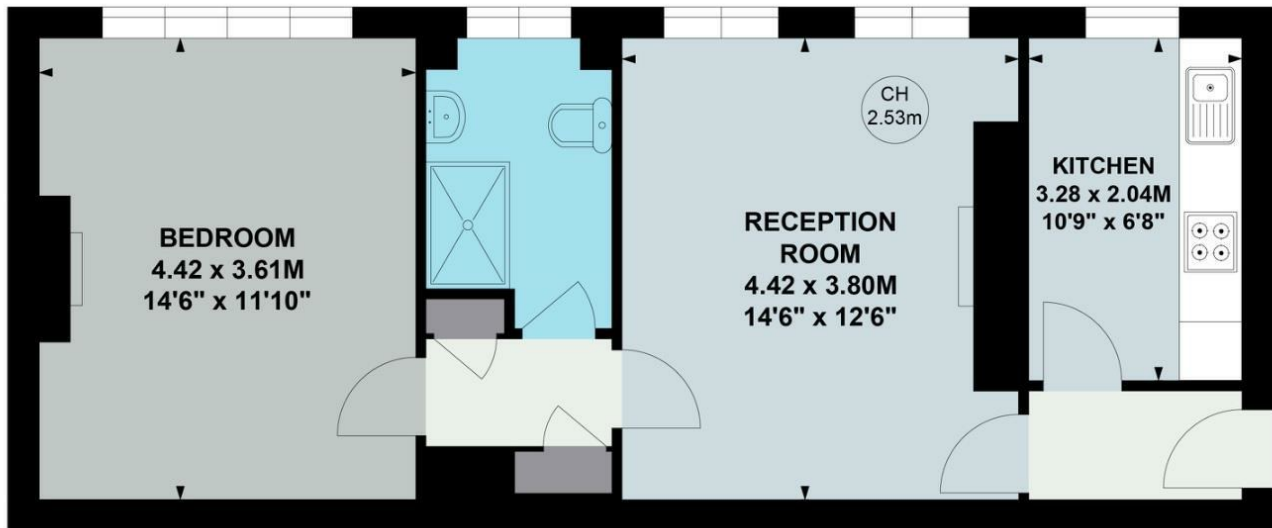
Heathfield Court, W4

Approximate gross internal area

50.96 sq m / 549 sq ft

Key :

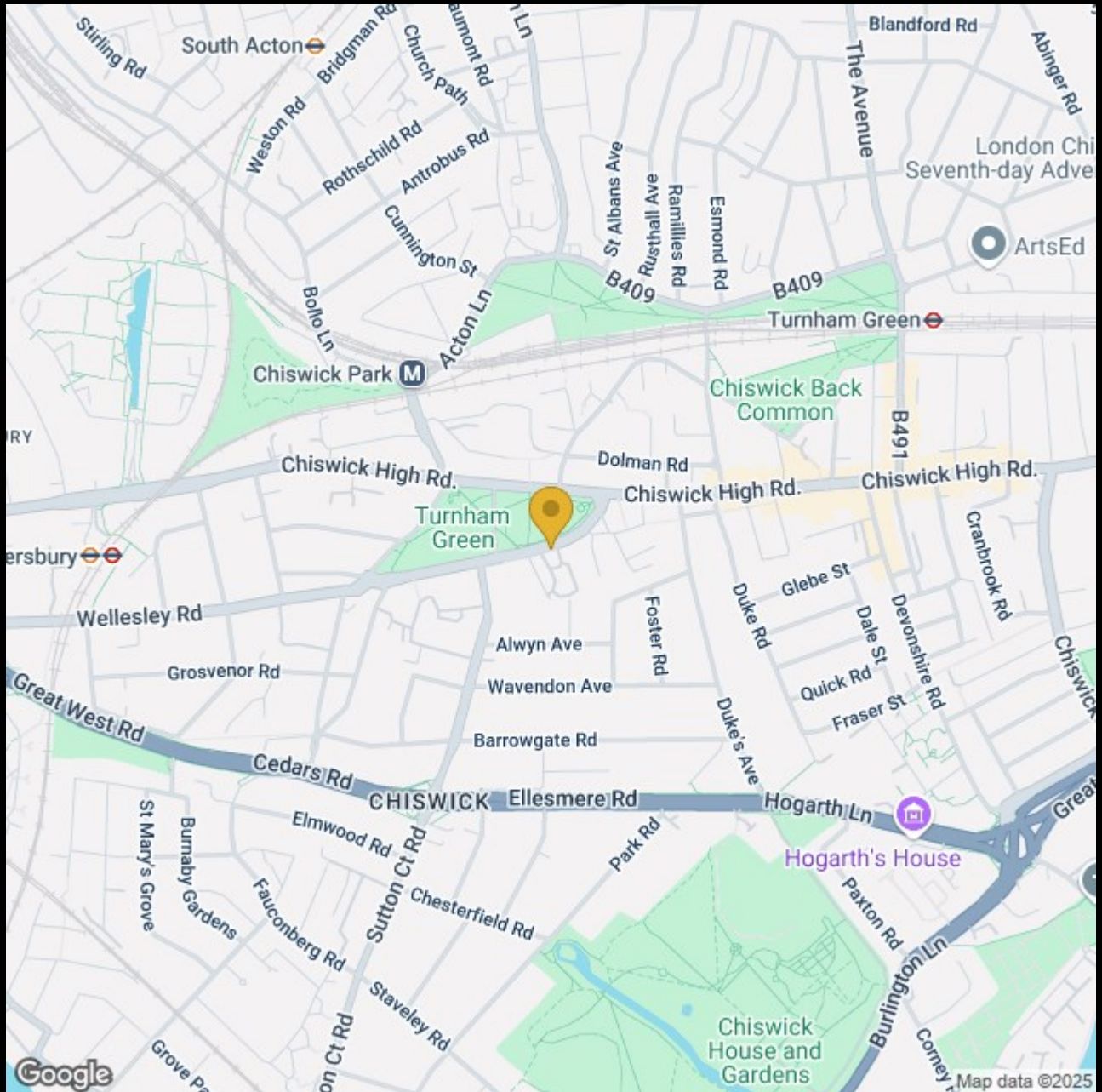
CH - Ceiling Height



Fourth Floor

Not to scale, for guidance only and must not be relied upon as a statement of fact.

All measurements and areas are approximate only



020 8995 2030
enquiries@harpersofchiswick.com
www.harpersofchiswick.com

www.twitter.com/HarpersChiswick
www.facebook.com/harpersofchiswick
www.instagram.com/harpersofchiswick
www.pinterest.co.uk/harpersofchiswick