



Blended expertise, purposefully applied...

We are a Chiswick based residential property consultancy that provides in-depth experience in the disciplines of estate agency, residential lettings, property management, property staging and interior design – a blend of expertise not commonly found in estate and lettings agency businesses.

Having this multi-faceted capability enables us to deliver success to our clients that are seeking a more bespoke and discreet experience than typically offered by high street estate or lettings agents.

Clients value our integrity, energy, expertise and unbiased advice...

The core values of our business are; integrity, clarity and success. Our advice and services are delivered from a trusted platform of professional qualification, experience, dedication and a wealth of in-depth knowledge. This thorough, yet innovative approach to everything that we do has resulted in a strong track record, as evidenced by consistent results and unquestionable success.

What is the new meaning of Bespoke?...

We work with an adaptable approach to our processes to suit individual clients requirements. For example; many of our clients want to avoid public promotion and seek discreet introductions. Over 70% of our transactions are completed without public marketing. We spend less time promoting ourselves and more time combining modern online marketing with a lifetime of networking to introduce the right person in the right way.

More doesn't mean more...

We consciously keep our active portfolio compact, so that we can successfully apply the time, high levels of detail, attention and management you require and deserve whilst achieving our joint objective, success.

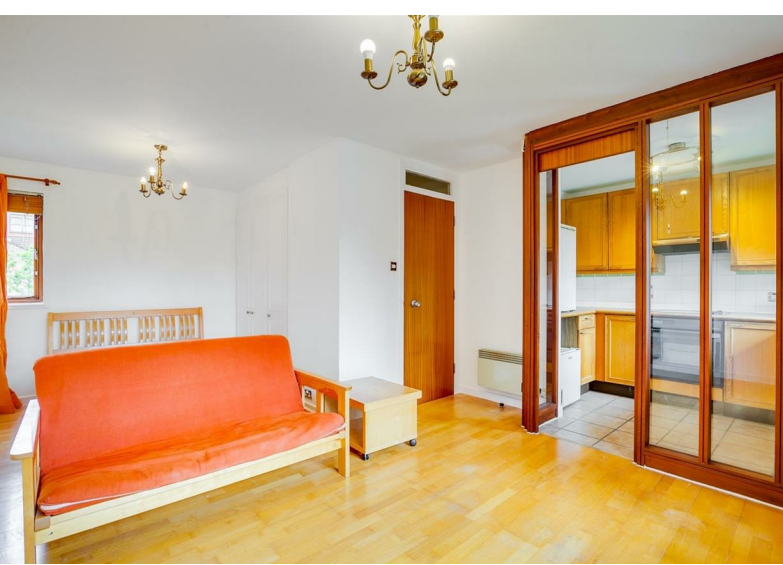


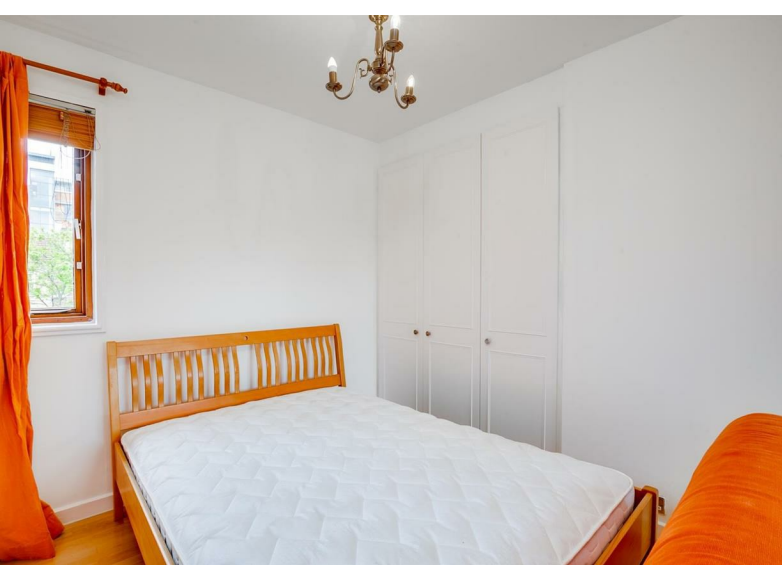
MAYFIELD ROAD, W12

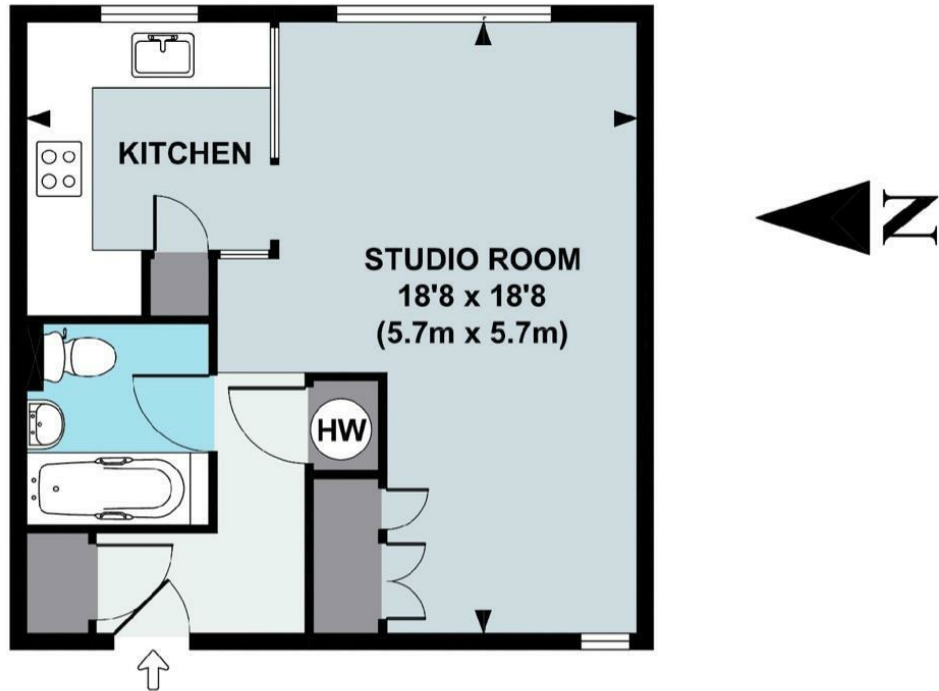
A well presented studio flat located on the first floor of a popular private development with good access to a wide selection of amenities.

The accommodation comprises: entrance hallway with storage cupboard, studio room currently with screen dividing bedroom area, separate kitchen and bathroom.

Mayfield Road also benefits from having well maintained garden areas and good amounts of parking. The development has good access for public transport into and out of town and enjoys local parkland and shopping at Westfield.





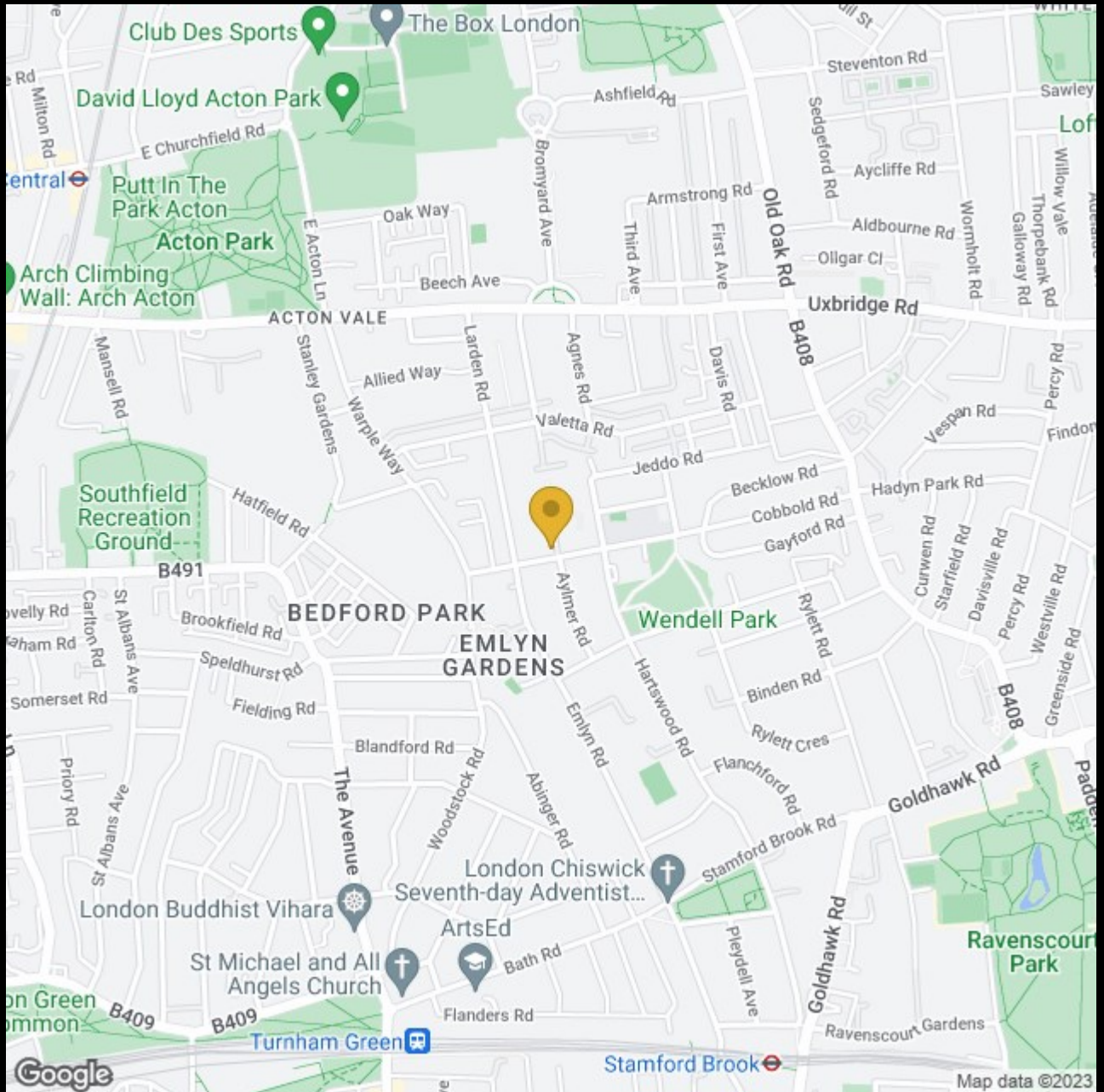


FIRST FLOOR

APPROX. GROSS INTERNAL FLOOR AREA 347 SQ FT / 32 SQ M

Floor plan produced in accordance with RICS Property Measurement Standards incorporating International Property Measurement Standards (IPMS2 Residential). © Red i 2021

Produced for illustration purposes and may not truly reflect design or dimensions and should not be used for valuation, condition or design purposes.



Club Des Sports

The Box London

David Lloyd Acton Park

Putt In The Park Acton

Acton Park

Arch Climbing Wall: Arch Acton

Southfield Recreation Ground

BEDFORD PARK

EMLYN GARDENS

Wendell Park

London Buddhist Vihara

London Chiswick Seventh-day Adventist...

St Michael and All Angels Church

ArtsEd

Turnham Green

Stamford Brook

Ravenscourt Park

Google

Map data ©2023

020 8995 2030
enquiries@harpersofchiswick.com
www.harpersofchiswick.com

www.twitter.com/HarpersChiswick
www.facebook.com/harpersofchiswick
www.instagram.com/harpersofchiswick
www.pinterest.co.uk/harpersofchiswick