





Blended expertise, purposefully applied...

We are a Chiswick based residential property consultancy that provides in-depth experience in the disciplines of estate agency, residential lettings, property management, property staging and interior design – a blend of expertise not commonly found in estate and lettings agency businesses. Having this multi-faceted capability enables us to deliver success to our clients that are seeking a more bespoke and discreet experience than typically offered by high street estate or lettings agents.

Clients value our integrity, energy, expertise and unbiased advice...

The core values of our business are; integrity, clarity and success. Our advice and services are delivered from a trusted platform of professional qualification, experience, dedication and a wealth of in-depth knowledge. This thorough, yet innovative approach to everything that we do has resulted in a strong track record, as evidenced by consistent results and unquestionable success.

What is the new meaning of Bespoke?...

We work with an adaptable approach to our processes to suit individual clients requirements. For example; many of our clients want to avoid public promotion and seek discreet introductions. Over 70% of our transactions are completed without public marketing. We spend less time promoting ourselves and more time combining modern online marketing with a lifetime of networking to introduce the right person in the right way.

More doesn't mean more...

We consciously keep our active portfolio compact, so that we can successfully apply the time, high levels of detail, attention and management you require and deserve whilst achieving our joint objective, success.



GREENEND ROAD, W4

A newly decorated, 1408 Sq Ft / 131 Sq M four bedroom family house that features a 22'4 kitchen/family room, utility room, guest cloakroom and landscaped rear garden that features a highly practical artificial lawn.

The accommodation comprises: entrance hallway, 15'9 reception room with feature fireplace, 22'4 kitchen/family room, utility room and guest cloakroom,

Stairs to first floor. Three bedrooms and family bathroom.

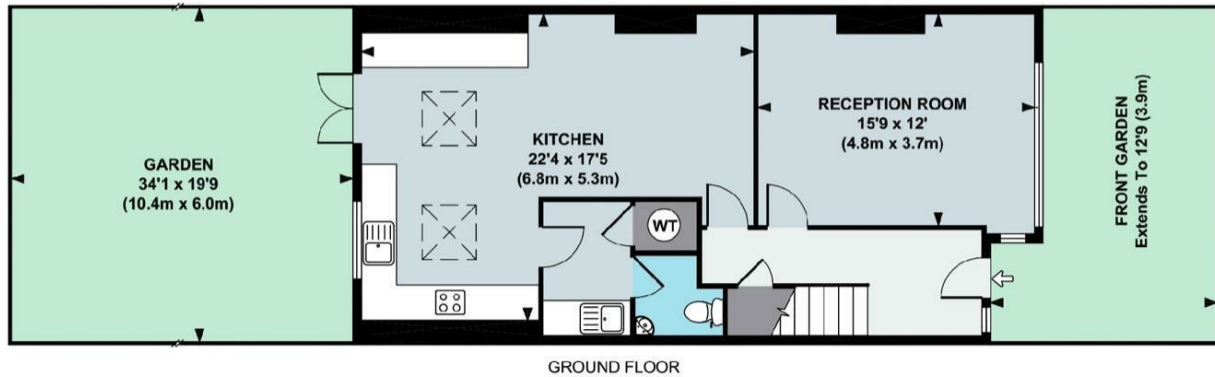
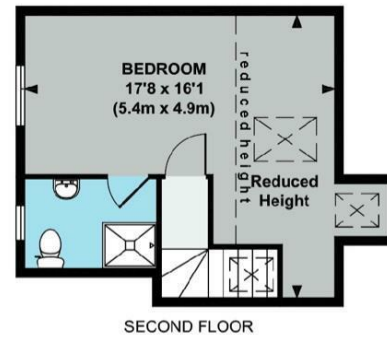
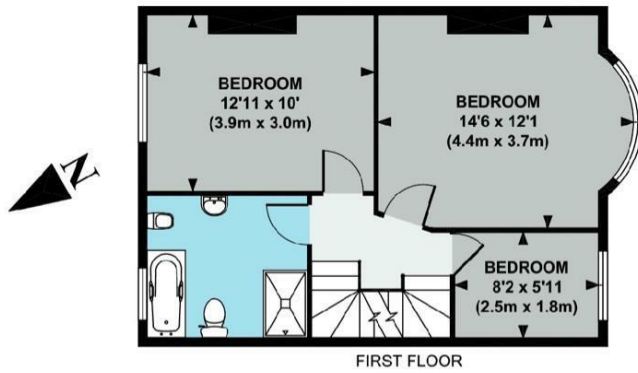
Stairs to top floor. Master bedroom with en-suite shower room.

Gardens. 34'1 landscaped rear garden that features a highly practical artificial lawn.

Greenend Road is situated within a highly desirable area of Chiswick known as Bedford Park Borders that features a selection of amenities including parks, bars & restaurants, local shopping, extensive shopping on Chiswick High Road and excellent transport connections into and out of town.



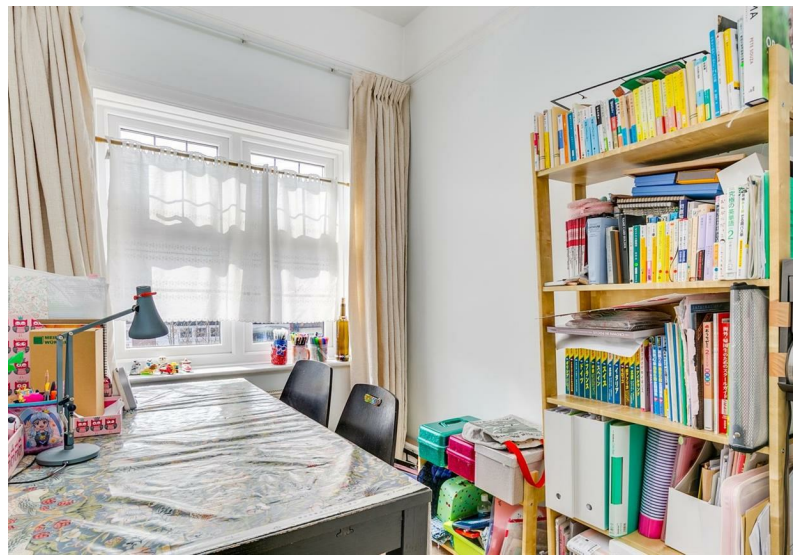


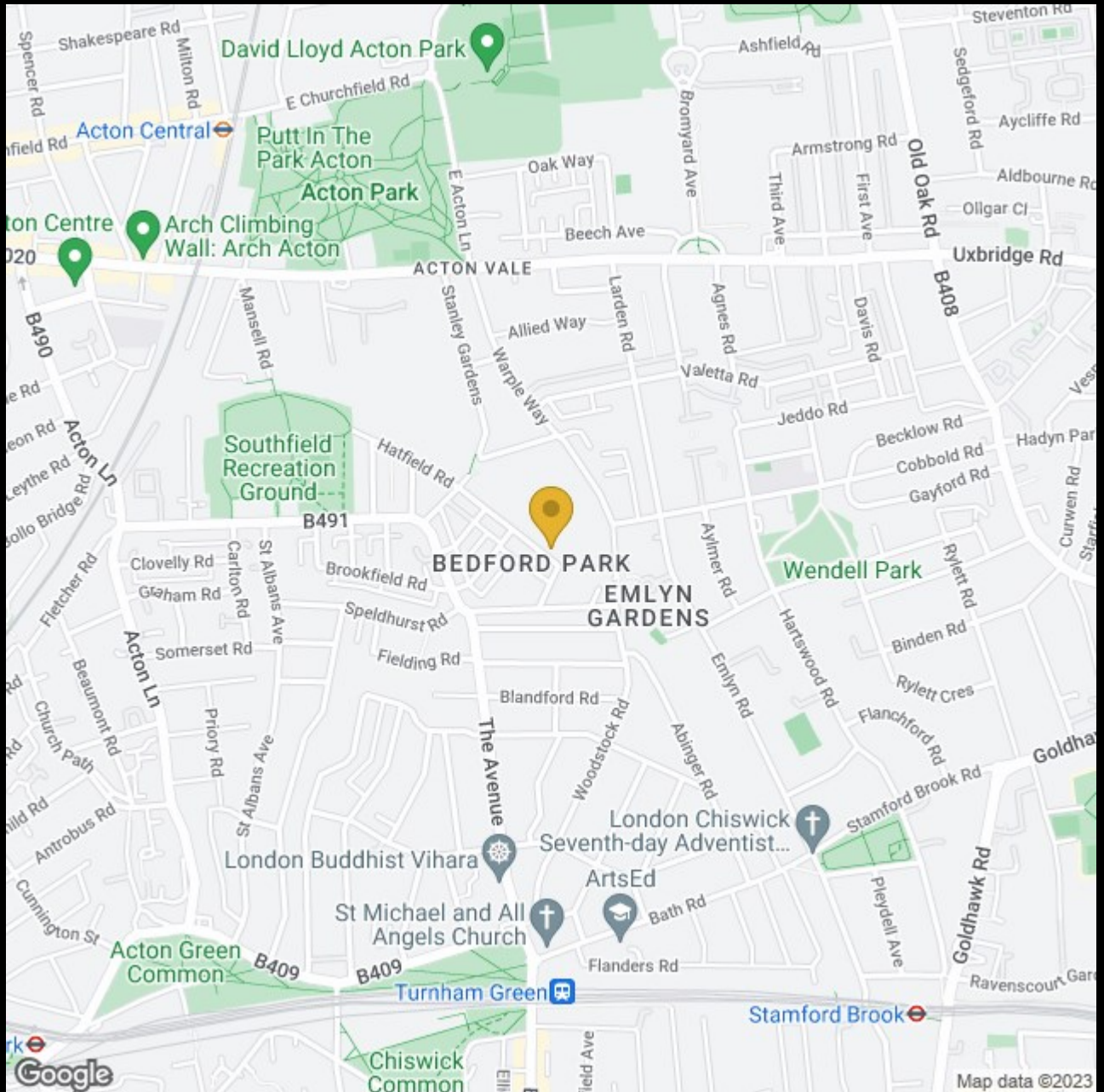


APPROX. GROSS INTERNAL FLOOR AREA 1408 SQ. FT / 131 SQ. M
(Includes Reduced Height Area)

Floor plan produced in accordance with RICS Property Measurement Standards incorporating International Property Measurement Standards (IPMS2 Residential). © Red i 2021

Produced for illustration purposes and may not truly reflect design or dimensions and should not be used for valuation, condition or design purposes.





David Lloyd Acton Park

Acton Central

Putt In The Park Acton

Acton Park

Arch Climbing Wall: Arch Acton

Southfield Recreation Ground

BEDFORD PARK

EMLYN GARDENS

Wendell Park

Acton Green Common

St Michael and All Angels Church

Turnham Green

ArtsEd

London Chiswick Seventh-day Adventist...

Stamford Brook

Google

Map data ©2023

020 8995 2030
enquiries@harpersofchiswick.com
www.harpersofchiswick.com

www.twitter.com/HarpersChiswick
www.facebook.com/harpersofchiswick
www.instagram.com/harpersofchiswick/
www.pinterest.co.uk/harpersofchiswick/